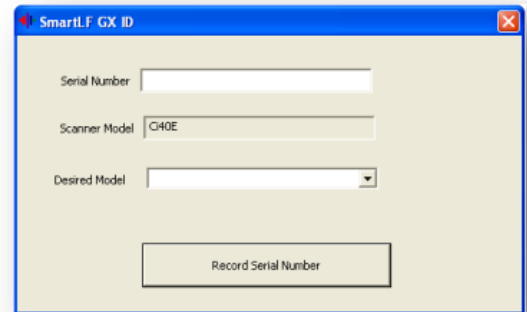


Scanner Upgrade

If your SmartLF scanner (Gx+, Cx+, Ci, SG or SC) is a model M (Mono) or C (Color) it can be upgraded by purchasing one of the three SmartLF Field Upgrade products: M to C, M to E, C to E. The process for model upgrading is as follows:

STEP 1 – GENERATE THE UPGRADE FILE USING THE UPGRADE PROGRAM

- Confirm that the scanner is connected and working correctly.
- Install & run the SG or SC Utilities program (or stand-alone upgrade program for Gx+, Cx+ or Ci).
- This program can be found on the install CD shipped with the scanner, or downloaded from:

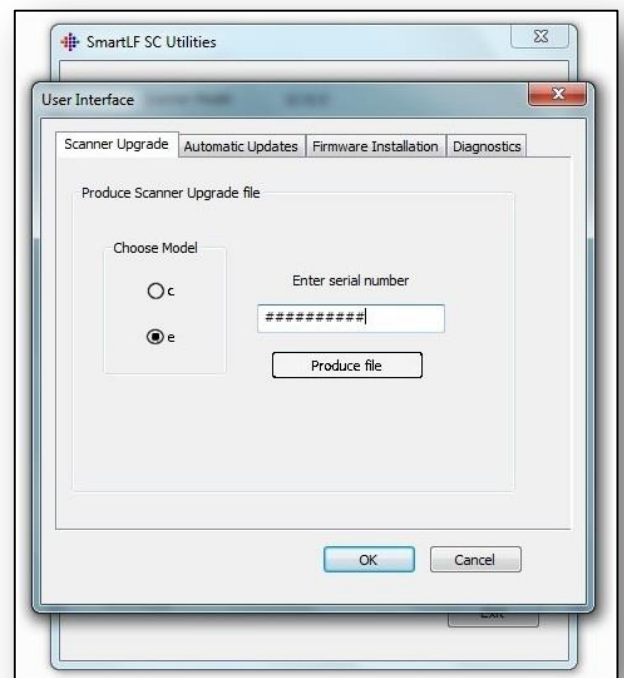


<http://www.colortracsupport.com/user/>

- Enter the serial number of the scanner to be upgraded.
- Choose the desired scanner model to upgrade to.
- 'Record Serial Number', or click 'Produce File' to then choose a location and name to save a 1kb txt file as.

STEP 2 - SEND THE UPGRADE FILE WITH YOUR ORDER.

- **If you are a distributor:** Send the upgrade file AND Purchase Order to smartlf.upgrade@colortrac.com. If you require pricing &/or product codes please contact your Colortrac Sales Manager.
- **If you are an end user:** Please contact the supplier of your scanner.



STEP 3 – RUN THE UPGRADE PROGRAM

- Colortrac / the supplier will send you a zip file containing a program which will be named the same as the serial number of the scanner to be upgraded. Unpack this program to a temporary directory on the Desktop of the PC attached to the scanner being upgraded, and then run the exe. Click the button labelled "Update Model". This will then upgrade the connected SmartLF scanner.
- Exit the program and then turn the scanner OFF. Wait for at least 10 seconds before turning the scanner back ON again. Verify the scanner is displaying the model type consistent with the upgrade process just carried out.