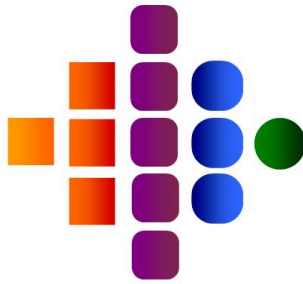
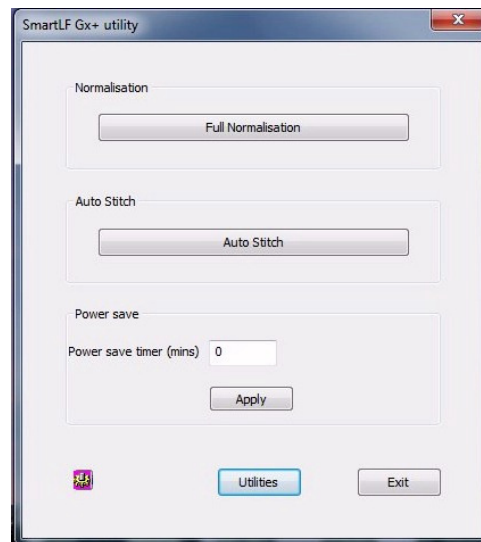


IM010	Colortrac Ltd	Page 1 of 5
Issue 1	SmartLF Instruction Manual	Date:02/02/11
This is a confidential controlled document and is the property of Colortrac Ltd. It is not to be copied or reproduced in part or whole.		



Colortrac

Our Business is Your Image



SmartLF

Instruction Manual

Downloading Firmware

SmartLF Scanner

Downloading Firmware

Instruction Manual

Issue 1

©Colortrac Ltd 2011

No part of this product or publication may be reproduced, copied or transmitted in any form or by any means without permission from:

**Technical Support,
Colortrac Ltd.
Units 3 – 5 Brunel Court.
Burrel Road.
St Ives,
Huntingdon,
Cambridgeshire,
PE27 3LW.
United Kingdom.**

**Tel: +44 (0)1480 464618
Fax: +44 (0)1480 464620**

www.colortrac.com

- The product and the contents of this publication may be changed without prior notification.
- Colortrac Ltd makes every effort to ensure this publication is free from errors. Misprints, errors or quality observations should be reported to Technical Support, Colortrac Ltd.
- Colortrac Ltd shall not be liable for any damages, errors, issues or events that result from the use of the equipment or this manual.

1.1 DOWNLOADING FIRMWARE

- Firmware can only be downloaded while the scanner is attached via USB to the PC.
- Make sure the utilities program is the latest version available from:

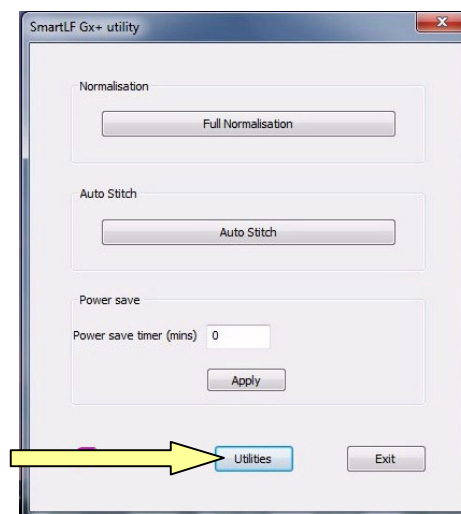
http://www.colortrac.com/support/support_downloads.htm

1.1.1 Procedure

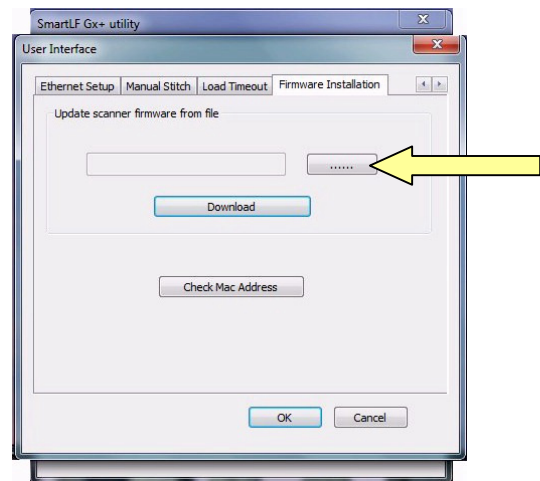
1. Save the latest firmware (in the form of a .cab file) from either an email from support, or the Colortrac website onto the desktop of the PC attached to the scanner
2. Locate the Utilities icon for the scanner model on the desktop or start menu (download from the above website if not already installed).

NOTE: Both the Gx+ and the Ci scanners will have their own utilities program, but they are nearly the same as each other. The diagrams indicated in this instruction are for the Gx+, but is for reference only, and both utilities can be operated in the same way.

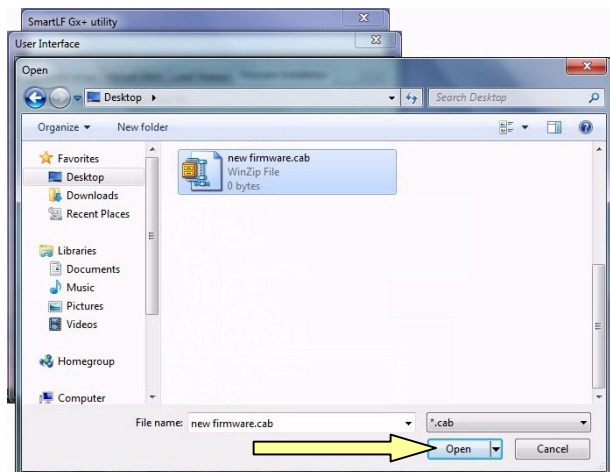
3. Open the 'utilities' menu.



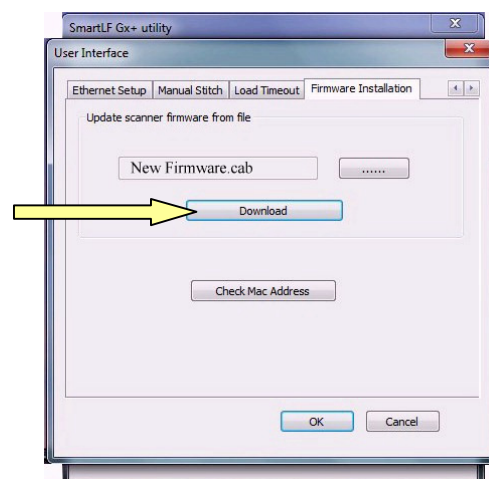
4. In the Firmware Installation tab, browse the new firmware from the desktop (or any other location you may have saved the file too).



5. Open the new firmware .cab. The name will include the scanner model and version number.



6. Press 'Download', then any other confirmation messages. This process takes approx 4 mins.



IMPORTANT NOTE: This process must be allowed to complete without any interruptions. If connection is lost, or the scanner is switched off before the completion message, the scanner will be damaged, and the Main Board will need replacing.

